



Artists impression of Northern Beaches Hospital exterior

Welcome to the first edition of the Northern Beaches Health Service Redevelopment community update.

Inside you will find information on the world-class Northern Beaches Hospital, the redesign of community health facilities on the Northern Beaches, the modernisation of Mona Vale Hospital and the work on roads and public transport underway to facilitate access to these sites.

Northern Beaches Hospital

Bringing health services closer to the Northern Beaches community

The new Northern Beaches Hospital due to open its doors in 2018 will work closely with Mona Vale Hospital and the three new community health facilities located at Dalwood, Brookvale and Mona Vale to support an integrated health service approach that ensures that patients get the right care, in the right place at the right time

Northern Beaches Hospital will be the primary hospital for the local area, treating both public and private patients in a safe and supportive healthcare environment.

The range of services available will reduce the need to travel outside the Northern Beaches for everything except the most highly specialised types of treatment that is only provided at a few hospitals state-wide.

Healthscope's Project Director Deborah Latta said the new hospital provided an opportunity to better connect with all health services and improve referral pathways to and from the hospital.

"We will be working with NSW Health to make it as easy as possible for local people to better navigate the health system and access more services than ever before on the Northern Beaches," said Project Director Ms Latta.

From 2016 Healthscope will begin talking with Northern Beaches health service providers, including non-government organisations, to discover the best ways of working together and linking services.

"This is an ambitious, long-term piece of work and it makes sense to start that journey now," Ms Latta said.



Artists impression of Northern Beaches Hospital room



1300
hospital staff



488
beds with room to expand



1400
carpark spaces

**For more information on
Northern Beaches Hospital**

enquiries@northernbeacheshospital.com.au

www.northernbeacheshospital.com.au

Lessons on site

Healthscope and Leighton Construction welcomed construction and engineering students from the neighbouring Forest High School for an interactive class in managing a construction site and building the new Northern Beaches Hospital.

In the first of many vocational opportunities created by the hospital, Healthscope's Project Director Deborah Latta described the thinking behind involving local students in what will be the first of many planned vocational opportunities.

"It's really important to inspire young people by creating dialogue about the many career paths available to them - from construction design, project management to working as a health professional - and Northern Beaches Hospital provides the opportunity," Ms Latta said.

Head Teacher, Teaching and Learning, Joel Wood praised the relationship between Healthscope and the school.

"Feedback from students has been overwhelmingly positive. The students are particularly excited about returning to observe key stages of the construction as it progresses. The School is very proud of the partnership we have with Healthscope and Leighton Construction and we are looking forward to presenting a range of real and authentic learning experiences to our students as a result of these collaborations," Mr Wood said.


6.5
hectare site


700
construction jobs created



Artists impression of interior of Northern Beaches Hospital

Redesigning community care

Prevention and Early Intervention can transform the health of a local community and the NSW Government is acknowledging this by investing \$100 million in community health facilities at Dalwood (Seaforth), Mona Vale and Brookvale.

Dalwood Child and Family Health Services

In November the new Dalwood Child and Family Health Services building opened its doors to the public. Designed and built to reflect modern community health practices the new building provides the growing number of families in the area with a central point where they can access a range of services.

The new building integrates with services already on site including the Family Care Centre, Dalwood Spilstead Services and Early Childhood Parenting Support providing clients with facilities that meet their health care needs in a community setting.

“Providing a comfortable, welcoming environment for families is critical to the success of the services that we deliver,” said Community Lead Ms Heather Gough.

Clients of existing services have welcomed the shift to the new building saying that they are looking forward to using the new facility as it will provide a new and welcoming environment for all services.

Mona Vale Community Health Centre

Located on the grounds of the Mona Vale Hospital the multi-storey purpose-built centre will open its doors in early 2016.

The new centre will be a hub for community health services at the northern end of the peninsula, including rehabilitation and aged care community services, Northern Sydney Home Nursing Service, community allied health and oral health.

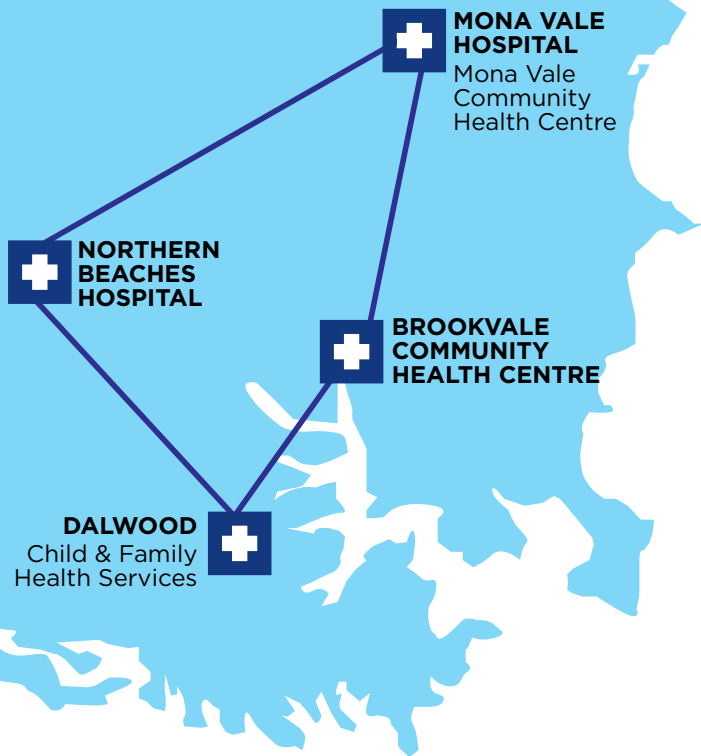
Brookvale Community Health Centre

The multi-storey Brookvale Community Health Centre opening in 2017 will be the third new community health facility to open and will work closely with the facilities at Dalwood and Mona Vale as well as the Northern Beaches Hospital to provide a network of comprehensive care through locally linked services.

The Brookvale Community Health Centre will be a major hub for services including mental health, community nursing, drug and alcohol counselling as well as providing a permanent home for BreastScreen NSW.

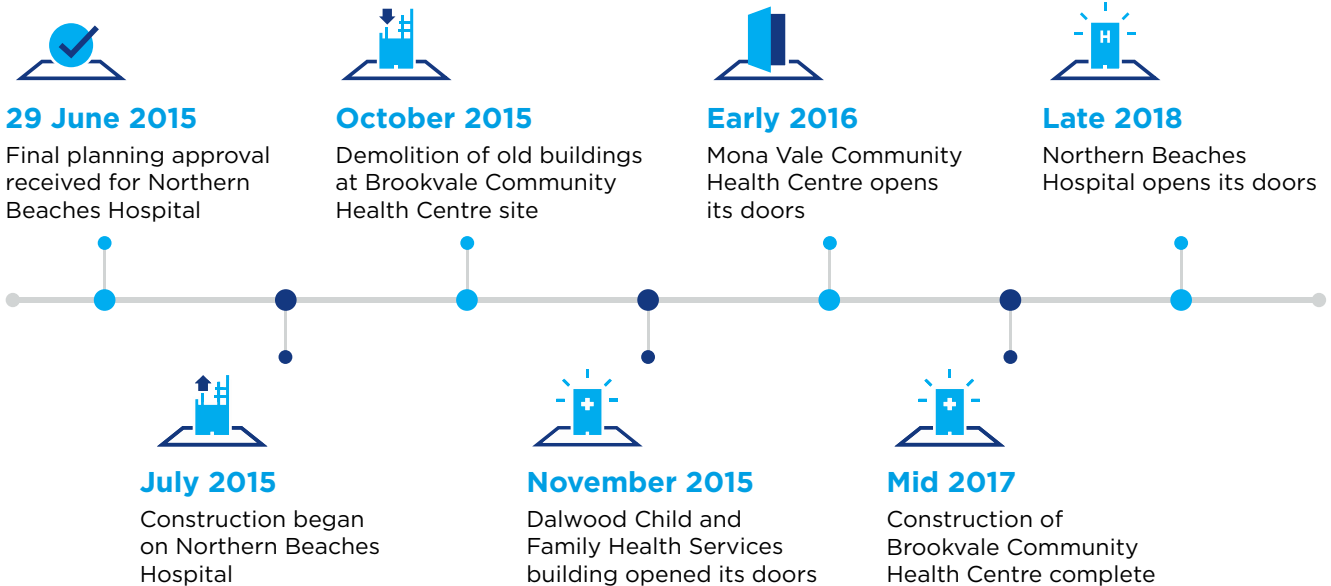


Aerial image of Mona Vale Community Health Centre and Hospital



"I am excited about the work which is happening at Mona Vale Hospital as it will ensure that it continues to play a central role in providing health care to the Northern Beaches community."

One of the most important parts of a well-functioning health service is to have a network of different health care facilities that can accommodate the needs of different patients. By modernising Mona Vale Hospital to work alongside Northern Beaches Hospital and the new community health facilities we can do exactly that," said General Manager Mr Bazik.



Modernising Mona Vale Hospital

Mona Vale Hospital's role will transform post-2018 when its focus will shift to enable it to support the integrated approach to health care on the Northern Beaches.

A significant investment is being made to ensure Mona Vale offers a comprehensive range of hospital and community health services including:

- 24 hour, seven-days a week Urgent Care Centre (at planning stage)
- 56 sub-acute rehabilitation/aged care beds (completed)
- 10 short stay beds (completed)
- Upgraded hydrotherapy pool (completed)

- Mona Vale Community Health Centre (to be complete early 2016)
- 10 geriatric, evaluation and management (GEM) beds (planning stage)
- palliative care
- Ambulatory services (upgrade completed in 2013)
- Helipad (upgrade completed in 2013)

For more information

www.nbhsredev.health.nsw.gov.au
9978 5410



Artists impression of Brookvale Community Health Centre and B-Line stop

Transforming roads and public transport

The Northern Beaches Bus Rapid Transit (BRT) program

The BRT program will deliver more frequent and reliable bus services for customers travelling between the Northern Beaches and the Sydney CBD.

The program will include:

- Nine modern B-Line stops at Mona Vale, Warriewood, Narrabeen, Collaroy, Dee Why, Brookvale, Manly Vale, Spit Junction (Mosman) and Neutral Bay with real-time information, seating, weather protection and improved facilities for customers
- Six new commuter car parks at Mona Vale, Warriewood, Narrabeen, Dee Why, Brookvale and Manly Vale providing around 900 spaces
- Brand-new double decker bus fleet with improved on-board capacity and comfort
- Roadworks including new bus lanes, bus bays, minor lane widening and other road improvements to support bus services
- Improved pedestrian and bicycle links to connect customers with B-Line stops.

Northern Beaches Hospital Road Connectivity and Network Enhancement Project

The NSW Government is upgrading roads around the new Northern Beaches Hospital with work planned to be completed in time for the hospital opening in 2018. These upgrades will provide customers with a better travel experience, increase the capacity of the road network and improve access through the area, for drivers, pedestrians and cyclists.

Roads and Maritime Services will deliver the roads upgrades in two stages:

- Stage 1 Connectivity Work will provide essential access to the Northern Beaches Hospital
- Stage 2 Network Enhancement Work will help increase capacity of the road network and reduce congestion.

Planning approval was granted on 29 June 2015 with construction of Stage 1 due to start in November 2015.

For more information

1800 048 751

www.b-line.transport.nsw.gov.au

projects@transport.nsw.gov.au

For more information

1800 014 307

(free call line available 24 hours)

nbhcommunity@ferrovialyork.com.au

www.rms.nsw.gov.au/projects/sydney-north/northern-beaches-hospital